

FOR UNITS WITH MAX FUSES
USE THIS LEGEND

MAXI FUSE BLOCK A

01	02	03	04	05	06
----	----	----	----	----	----

MAXI FUSE BLOCK B

01	02	03	04	05	06
----	----	----	----	----	----

MINI FUSE BLOCK

20	19	18	17	16
15	14	13	12	11
10	09	08	07	06
05	04	03	02	01

NOTE:

- [Y] WHERE Y REFERS TO THE B.O.M. ITEM NUMBER.
- ALL ELECTRICAL CHASSIS GROUND CONNECTIONS WILL USE STAR WASHERS.
- FB - FUSE BLOCK
- ENC A/C SWITCH - ACTIVATE REAR BLOWER, ENC COMPRESSOR, AND ENC CONDENSOR.
- THE A/C SYSTEMS ARE COMPLETELY SEPARATE.
- NC - NO CONNECTION

NOTE

- [Y] WHERE Y REFERS TO THE B.O.M. ITEM NUMBER.
- ALL ELECTRICAL CHASSIS GROUND CONNECTIONS WILL USE STAR WASHERS.
- ALL EXTERIOR WIRING CONNECTIONS WILL BE COVERED WITH MASTIC LINED HEAT SHRINK TUBING.

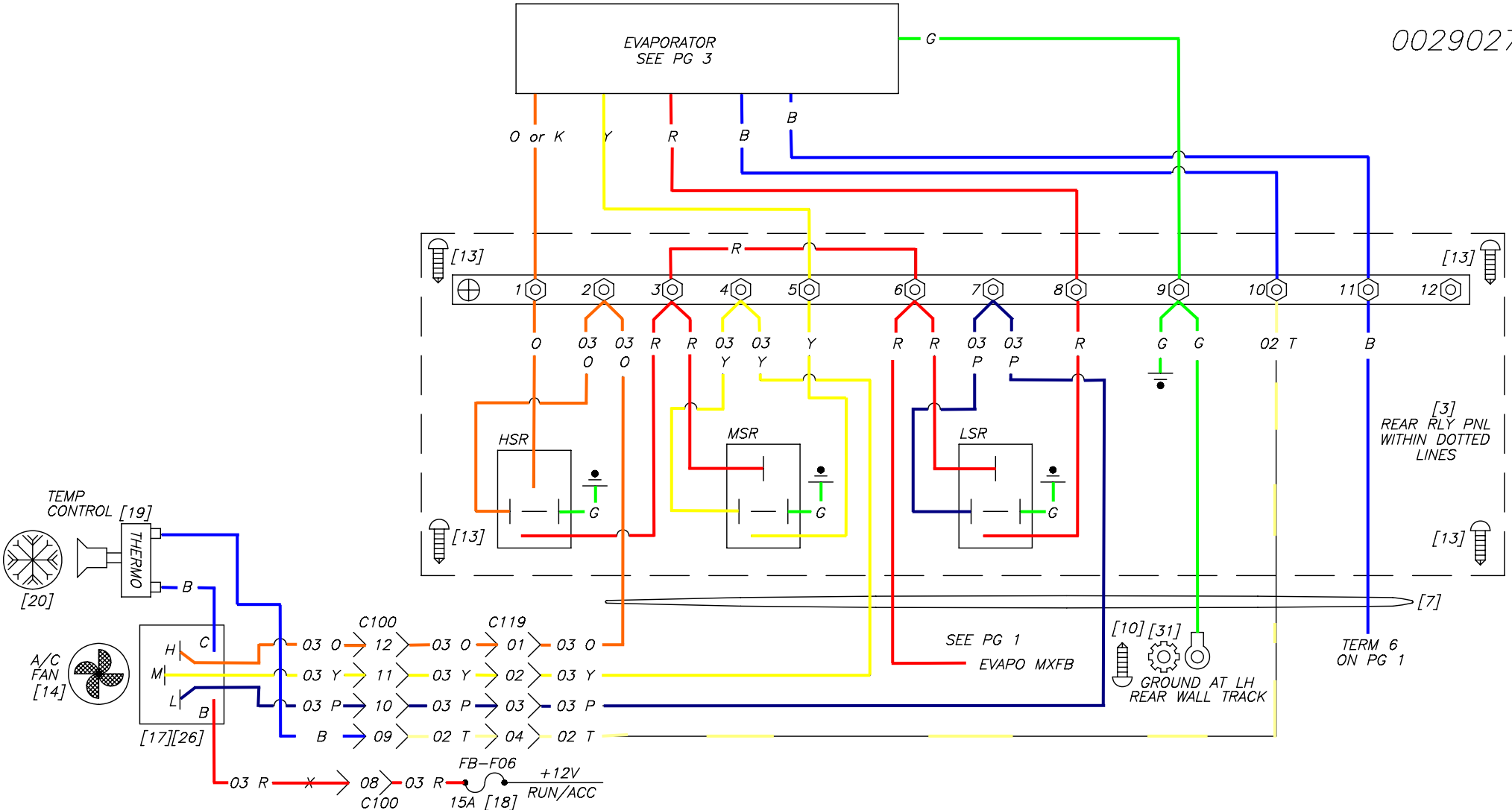
Eldorado National

— a THOR company —

1655 WALL STREET
SALINA, KS. 67401

<p>TITLE: A/C SCHEM, ALF/ALC/ATF/ATC/AEC CAC MAX 03</p>	
<p>MATERIAL SPEC: SEE B.O.M.</p>	
<p>PART NUMBER 0029027</p>	<p>PAGE 1 of 3</p>

NEXT ASSEMBLY: NONE	DRAWING INFORMATION									
SUPERCEDES: 0025176	DRAWN: HOLCOM	CKD:								
DO NOT SCALE DRAWING	DATE: 7/02/03	SIZE: A								
MARK PART NUMBER AND REVISION ON ALL PARTS	SCALE: NTS	WGT:	B	BJM	1/14/09	N/C PART			13805	
THIS DRAWING IS THE PROPERTY OF ELDRORDO NATIONAL COMPANY, A THOR INDUSTRIES COMPANY AND IS NOT TO BE DUPLICATED OR USED IN ANY WAY DETRIMENTAL TO THEIR BEST INTEREST. REV. 02/02	TOLERANCE UNLESS SPECIFIED		A	JWW	11/29/04	ADDED OPTIONAL RELAY PAGE 3			09559	
	FRACTIONS ± 1/16	DECIMALS .00 ± .06		TLH	7/07/03	RELEASE TO PRODUCTION			08020	
	ANGLES + 1 DEG.		REV.	BY	DATE	DESCRIPTION			RELEASE #	



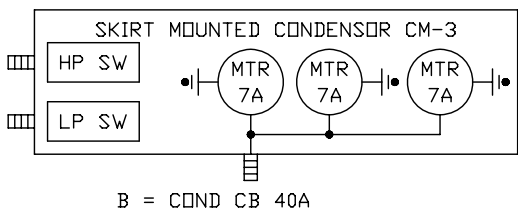
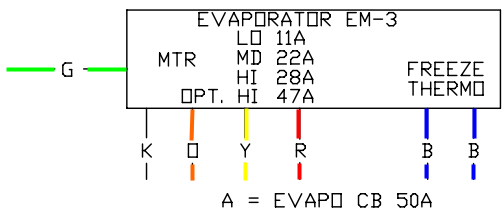
- NOTE
1. [Y] WHERE Y REFERS TO THE B.O.M. ITEM NUMBER.
 2. ALL ELECTRICAL CHASSIS GROUND CONNECTIONS WILL USE STAR WASHERS.
 3. ALL EXTERIOR WIRING CONNECTIONS WILL BE COVERED WITH MASTIC LINED HEAT SHRINK TUBING.
 4. NC - NO CONNECTION

Eldorado National
 — a THOR company —
 1655 WALL STREET
 SALINA, KS. 67401

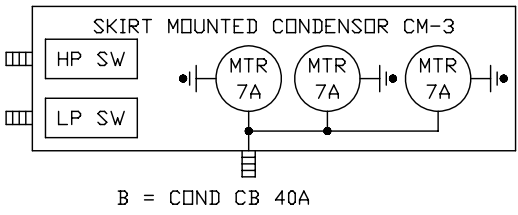
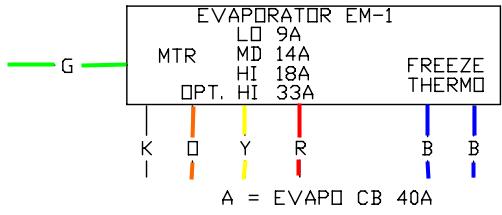
NEXT ASSEMBLY: NONE	DRAWING INFORMATION					
SUPERCEDES: 0025176	DRAWN: HOLCOM	CKD:				
DO NOT SCALE DRAWING	DATE: 7/02/03	SIZE: A				
MARK PART NUMBER AND REVISION ON ALL PARTS	SCALE: NTS	WGT:	B	BJM	1/14/09	N/C PART 13805
THIS DRAWING IS THE PROPERTY OF ELDERADO NATIONAL COMPANY, A THOR INDUSTRIES COMPANY AND IS NOT TO BE DUPLICATED OR USED IN ANY WAY DETRIMENTAL TO THEIR BEST INTEREST. REV. 02/02	TOLERANCE UNLESS SPECIFIED		A	JWW	11/29/04	ADDED OPTIONAL RELAY PAGE 3 09559
	FRACTIONS ± 1/16	DECIMALS .00 ± .06		TLH	7/07/03	RELEASE TO PRODUCTION 08020
	ANGLES + 1 DEG.		REV.	BY	DATE	DESCRIPTION

TITLE: A/C SCHEM, ALF/ALC/ATF/ATC/AEC CAC MAX 03
MATERIAL SPEC: SEE B.O.M.
PART NUMBER 0029027
PAGE 2 of 3

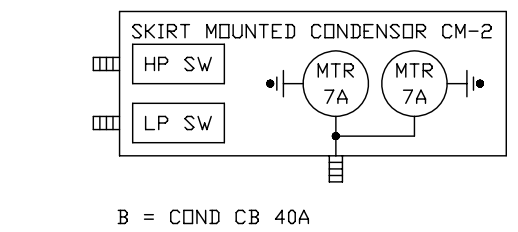
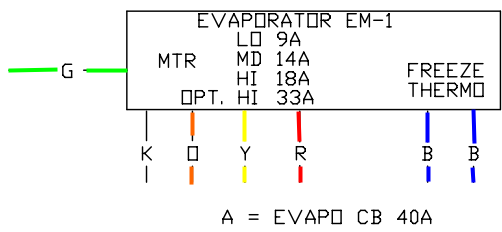
A/C 663



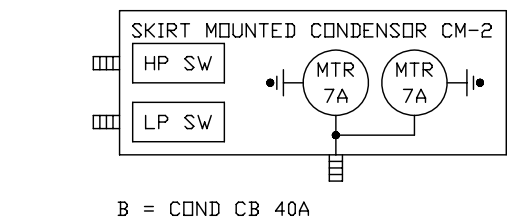
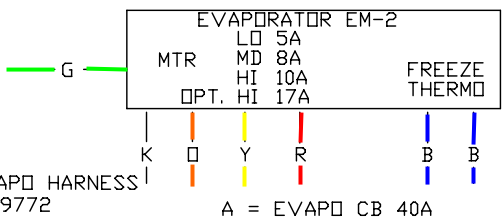
A/C 553



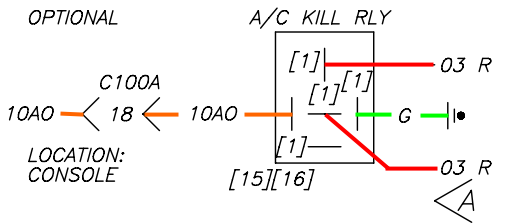
A/C 552



A/C 442



REAR EVAP HARNESS IS P/N 69772



NOTE
1. NS-NOT SHOWN ON THIS DRAWING

ITEM	QTY.	PART NO.	DESCRIPTION
1	4	68467	TERM, AMP 14-16 AWG RELAY CONN
2	4	68468	TERM, AMP 10-12 AWG RELAY CONN
3	1	0024465	PANEL, NAV EVAPO RELAY
4	1	62161	CONN, RING 10-12 AWG X 1/4 INS
5	6	62320	CONN, RING 14-16 AWG X #10 INS
6	5	62160	CONN, RING 10-12 AWG X #10 INS
7	1	0025454	HARNESS, AL/ALC/AT/ATC REAR EVAPORATOR
8	1	68451	BLOCK, TERM 6-POS 1-ROW #10
9	4	112927	NUT, #10-32 KEP PLTD HEX
10	3	116960	SCREW, TEK #8 X 3/4" PH PHIL
11	2	0001305	WASHER, #8 EXT STAR
12	2	63092	FUSE, MAXI FUSE 40 AMP
13	9	116920	SCREW, TEK #8 X 1/2" PH PHIL
14	REF	120426	KNOB, ROTARY 3-SPEED SWITCH
15	2	69860	CONN, AMP RELAY SOCKET
16	2	68323	RELAY, SPDT WITH MOUNT
17	REF	124860	SWITCH, ROTARY 3-SPEED
18	2	63069	FUSE, BLADE 15A
19	REF	120427	SWITCH, THERMOSTAT
20	REF	120428	SWITCH, KNOB THERMOSTAT
21	1	0025128	A/C CONDENSOR CUTOUT
22	30.00	69771	WIRE, 3-COND A/C COND
23	30.00	69850	FLEXLOOM, 1/4 SLIT 1 @ 360.00"
24	1.00	69055	WIRE, GXL 14 AWG BLUE 20 B 1 @ 12.00"
25	1.00	69045	WIRE, GXL 14 AWG WHITE 25W 1 @ 12.00"
26	1	120425	SWITCH, CONNECTOR WITH HARNESS
27			
28	2.00	69085	WIRE, GXL 14 AWG GREEN G 2 @ 12.00"
29	1.00	69065	WIRE, GXL 14 AWG RED R 1 @ 12.00"
30	1	63093	FUSE, MAXI FUSE 50 AMP
31	1	119046	WASHER, 5/16" EXT STAR
32	2.00	69250	WIRE, GXL 10 AWG BLACK K 2 @ 12.00"
33	1.00	69005	WIRE, GXL 14 AWG TAN 02 T 1 @ 12.00"
34	1	60927	BRKR, 40A AUTORESET XMNT

NS

NEXT ASSEMBLY: NONE	DRAWING INFORMATION				
SUPERCEDES: 0025176	DRAWN: HOLCOM	CKD:			
DO NOT SCALE DRAWING	DATE: 7/02/03	SIZE: A			
MARK PART NUMBER AND REVISION ON ALL PARTS	SCALE: NTS	WGT:	B	BJM	1/14/09
THIS DRAWING IS THE PROPERTY OF EL Dorado NATIONAL COMPANY, A THOR INDUSTRIES COMPANY AND IS NOT TO BE DUPLICATED OR USED IN ANY WAY DETRIMENTAL TO THEIR BEST INTEREST. REV 02/02	TOLERANCE UNLESS SPECIFIED		A	JWW	11/29/04
	FRACTIONS ± 1/16	DECIMALS .00 ± .06		TLH	7/07/03
	ANGLES + 1 DEG.				
	REV.	BY	DATE	DESCRIPTION	RELEASE #

ElDorado National

— a THOR company —

1655 WALL STREET
SALINA, KS. 67401

TITLE:
A/C SCHEM, ALF/ALC/ATF/ATC/AEC
CAC MAX 03

MATERIAL SPEC:
SEE B.O.M.

PART NUMBER
0029027

PAGE
3 of 3