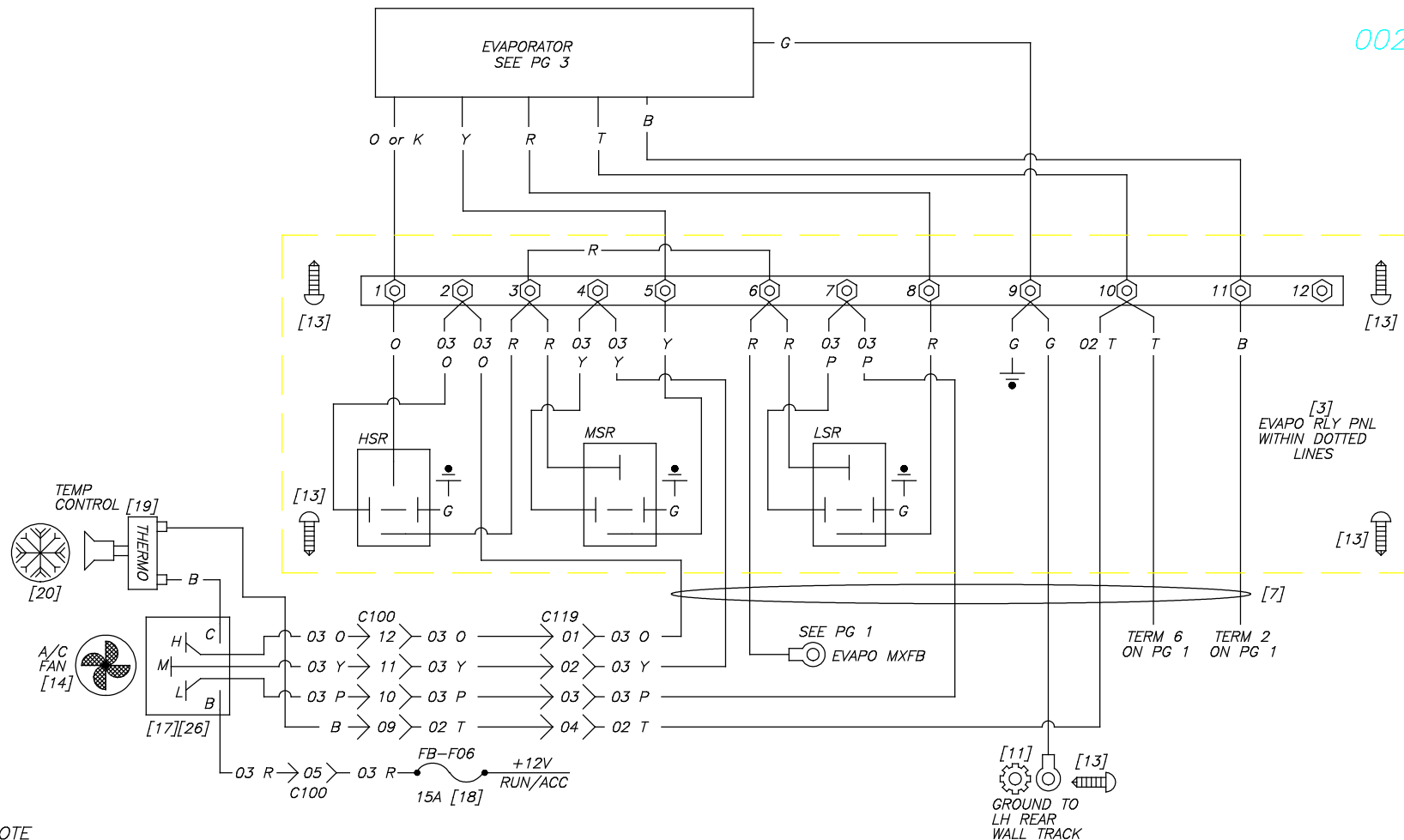


0029019

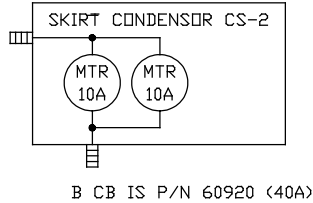
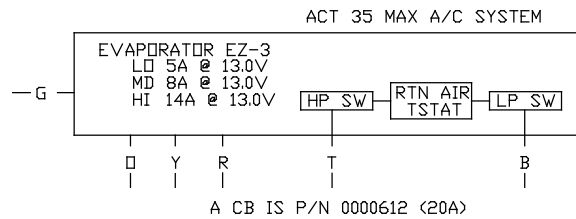
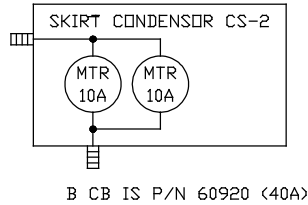
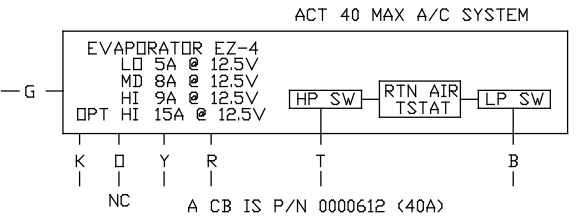
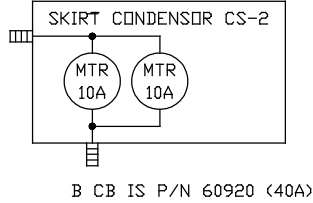
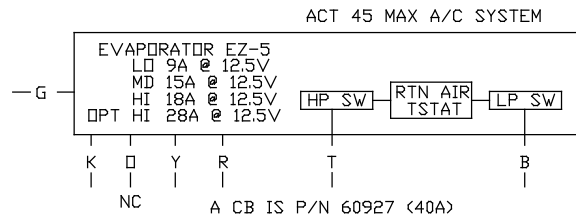
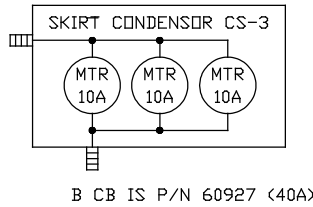
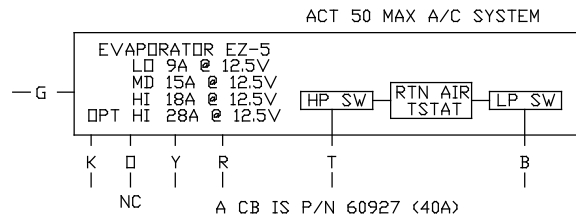


NOTE

1. [Y] WHERE Y REFERS TO THE B.O.M. ITEM NUMBER.
2. ALL ELECTRICAL CHASSIS GROUND CONNECTIONS WILL USE STAR WASHERS.
3. ALL EXTERIOR WIRING CONNECTIONS WILL BE COVERED WITH MASTIC LINED HEAT SHRINK TUBING.
4. NC - NO CONNECTION

Eldorado National 
 — a THOR company — 1655 WALL STREET SALINA, KS. 67401

NEXT ASSEMBLY: NONE	DRAWING INFORMATION					
SUPERCEDES: 0025323	DRAWN: HOLCOM	CKD:				TITLE: A/C SCHEM, ALF/ALC/ATF/ATC/AEC ACT MAX 03
DO NOT SCALE DRAWING	DATE: 7/02/03	SIZE: A				MATERIAL SPEC: SEE B.O.M.
MARK PART NUMBER AND REVISION ON ALL PARTS	SCALE: NTS	WGT:				PART NUMBER 0029019
THIS DRAWING IS THE PROPERTY OF ELDORADO NATIONAL COMPANY, A THOR INDUSTRIES COMPANY AND IS NOT TO BE DUPLICATED OR USED IN ANY WAY DETRIMENTAL TO THEIR BEST INTEREST. REV. 02/02	TOLERANCE UNLESS SPECIFIED		A	BJM	1/14/09	N/C PART
	FRACTIONS ± 1/16	DECIMALS .00 ± .06	ANGLES + 1 DEG.	REV. BY	DATE	DESCRIPTION
						RELEASE # 08020
						PAGE 2 OF 3



NOTE
1. NS - NOT SHOWN ON THIS DRAWING
2. NC - NO CONNECTION

ITEM	QTY.	PART NO.	DESCRIPTION	
1	4	68467	TERM, AMP 14-16 AWG RELAY CONN	
2	4	68468	TERM, AMP 10-12 AWG RELAY CONN	
3	1	0024465	PANEL, NAV EVAPO RELAY	
4	2	62161	CONN, RING 10-12 AWG X 1/4 INS	
5	5	62320	CONN, RING 14-16 AWG X #10 INS	
6	4	62160	CONN, RING 10-12 AWG X #10 INS	
7	1	0025454	HARNES, AL/ALC/AT/ATC REAR EVAPORATOR	
8	1	68451	BLOCK, TERM 6-POS 1-ROW #10	
9	6	112927	NUT, #10-32 KEP PLTD HEX	
10	2	116960	SCREW, TEK #8 X 3/4" PH PHIL	
11	3	0001305	WASHER, #8 EXT STAR	
12	2	63092	FUSE, MAXI FUSE 40 AMP	
NS	13	10	116920	SCREW, TEK #8 X 1/2" PH PHIL
14	REF	120426	KNOB, ROTARY 3-SPEED SWITCH	
NS	15	2	69860	CONN, AMP RELAY SOCKET
NS	16	2	68323	RELAY, SPDT WITH MOUNT
17	REF	124860	SWITCH, ROTARY 3-SPEED	
18	2	63069	FUSE, BLADE 15A	
19	REF	120427	SWITCH, THERMOSTAT	
20	REF	120428	SWITCH, KNOB THERMOSTAT	
NS	21	1	0025128	A/C CONDENSOR CUTOUT
22	30.00	69250	WIRE, GXL 10 AWG BLACK K 1 @ 360.00"	
23	30.00	69850	FLEXLOOM, 1/4 SLIT 1 @ 384.00"	
24	1.00	69095	WIRE, GXL 14 AWG BROWN 20N 1 @ 12.00"	
25	1.00	69045	WIRE, GXL 14 AWG WHITE 25W 1 @ 12.00"	
26	1	120425	SWITCH, CONNECTOR WITH HARNESS	
27				
28	2.00	69085	WIRE, GXL 14 AWG GREEN G 2 @ 12.00"	
29	1.00	69065	WIRE, GXL 14 AWG RED R 1 @ 12.00"	
30				
31				
32	2.00	69250	WIRE, GXL 10 AWG BLACK K 2 @ 12.00"	
33	1.00	69005	WIRE, GXL 14 AWG TAN 02 T 1 @ 12.00"	
34	2	119056	WASHER, 3/8 INT/EXT STAR	
35	1	62280	CONN, RING 10-12 AWG X 3/8 INS	
36				
37	2.00	69285	WIRE, GXL 10 AWG GREEN G 1 @ 24.00"	
38				

ElDorado National
— a THOR company —



1655 WALL STREET
SALINA, KS. 67401

NEXT ASSEMBLY: NONE	DRAWING INFORMATION						
SUPERCEDES: 0025323	DRAWN: HOLCOM	CKD:					
DO NOT SCALE DRAWING	DATE: 7/02/03	SIZE: A					
MARK PART NUMBER AND REVISION ON ALL PARTS	SCALE: NTS	WGT:					
THIS DRAWING IS THE PROPERTY OF ELDRADO NATIONAL COMPANY, A THOR INDUSTRIES COMPANY AND IS NOT TO BE DUPLICATED OR USED IN ANY WAY DETRIMENTAL TO THEIR BEST INTEREST. REV. 02/02	TOLERANCE UNLESS SPECIFIED	A	BJM	1/14/09	N/C PART	13805	
	FRACTIONS ± 1/16	-	TLH	7/07/03	RELEASE TO PRODUCTION	08020	PART NUMBER
	DECIMALS .00 ± .06	REV. BY	DATE	DESCRIPTION	RELEASE #	0029019	PAGE
	ANGLES + 1 DEG.						3 of 3

TITLE:
A/C SCHEM, ALF/ALC/ATF/ATC/AEC
ACT MAX 03
MATERIAL SPEC:
SEE B.O.M.