

- NOTE:
- [Y] WHERE Y REFERS TO THE B.O.M. ITEM NUMBER.
  - ALL ELECTRICAL CHASSIS GROUND CONNECTIONS WILL USE STAR WASHERS.
  - FB - FUSE BLOCK
  - ENC A/C SWITCH -ACTIVATE REAR BLOWER, ENC COMPRESSOR, AND ENC CONDENSOR.
  - THE A/C SYSTEMS ARE COMPLETELY SEPARATE.
  - NC - NO CONNECTION

- NOTE
- [Y] WHERE Y REFERS TO THE B.O.M. ITEM NUMBER.
  - ALL ELECTRICAL CHASSIS GROUND CONNECTIONS WILL USE STAR WASHERS.
  - ALL EXTERIOR WIRING CONNECTIONS WILL BE COVERED WITH MASTIC LINED HEAT SHRINK TUBING.

| REV. | BY  | DATE     | DESCRIPTION   | ER NUMBER |
|------|-----|----------|---|-----------|
| G    | SMK | 8/18/03  | ADDED "REPLACED BY" PART # TO NON-CURRENT BLOCK         | 08194     |
| F    | MLS | 8/14/01  | REF ITEMS (14, 17, 19, & 20) PARTS COME IN A/C KIT      | 06486     |
| E    | DWR | 09/19/00 | CORR A/C KILL RLY CONN                                  | 05598     |
| D    | DCW | 8/22/00  | MADE MULTIPLE REV. TO DWG AND BOM                       | 05511     |
| C    | DWR | 06/22/00 | ADDED KILL RLY WITH LIFT DOOR OPEN; VENDOR CHGD RLY PNL | 05326     |
| -    | JWW | 10/19/98 | RELEASE TO PRODUCTION                                   | 03848     |

NEXT ASSY.: NONE  
 SUPERCEDES: 0024076  
 DO NOT SCALE DRAWING  
 MARK PART NUMBER AND REVISION ON ALL PARTS

THIS DRAWING IS THE PROPERTY OF ELDORADO NATIONAL COMPANY, A THOR INDUSTRIES COMPANY AND IS NOT TO BE DUPLICATED OR USED IN ANY WAY DETRIMENTAL TO THEIR BEST INTEREST.

| TOLERANCE UNLESS SPECIFIED |           | DRAWING INFORMATION |         |
|----------------------------|-----------|---------------------|---------|
| FRACTIONS                  | ± 1/16    | DRAWN: WARD         | CKD.:   |
| DECIMALS                   | .00 ± .06 | DATE: 10/19/98      | SIZE: A |
| ANGLES                     | ± 1 DEG.  | SCALE: 1=4          | WT.:    |



304 AVENUE B  
 SO. INDUSTRIAL AREA  
 SALINA, KS. 67401

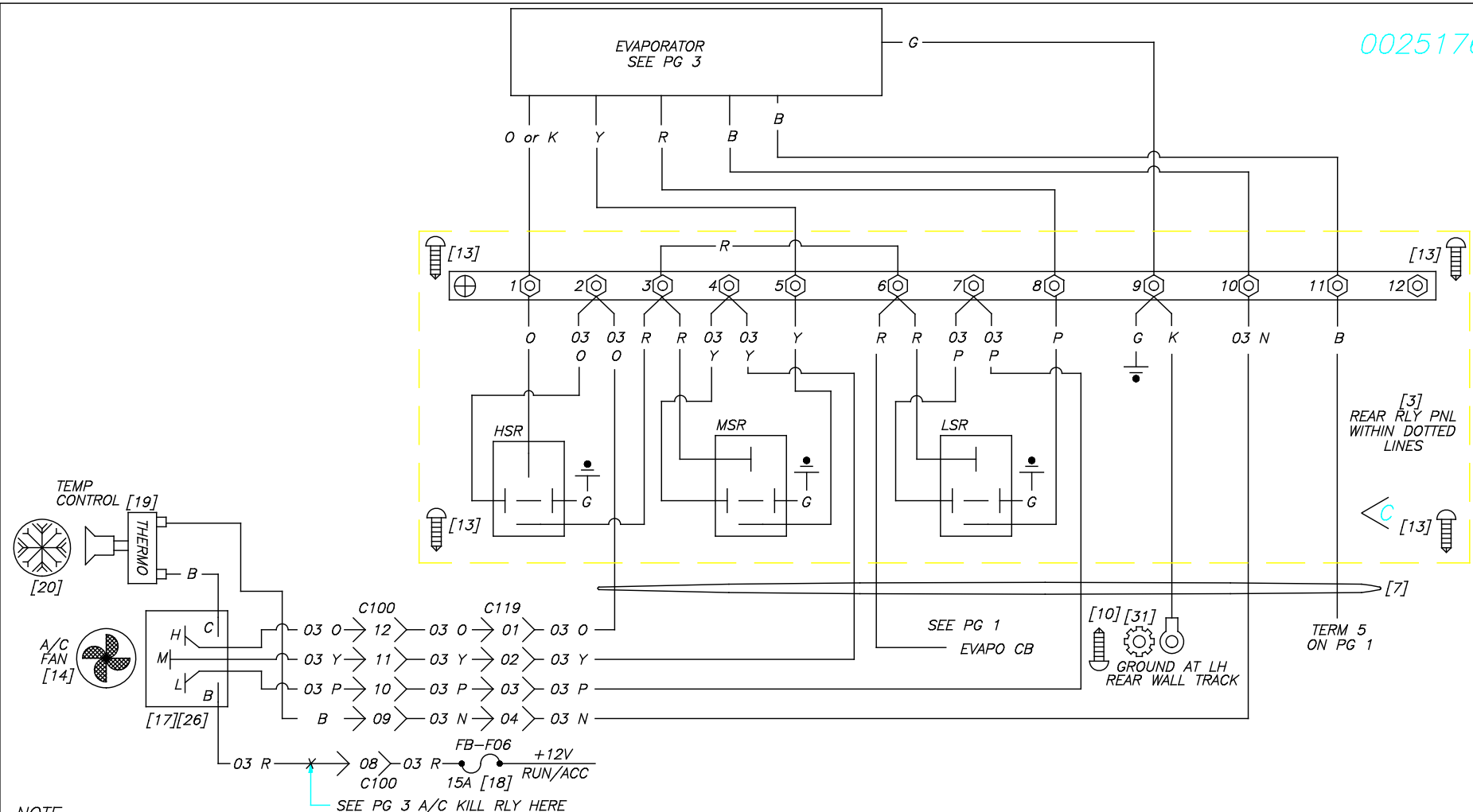
ELDORADO NATIONAL CO. A THOR INDUSTRIES COMPANY

TITLE:  
 A/C SCHEMATIC, AT/AL/ATC CAC MAX

MAT'L SPEC.  
 SEE B.O.M.

PART NUMBER  
 0025176

PAGE  
 1 of 3



- NOTE
1. [Y] WHERE Y REFERS TO THE B.O.M. ITEM NUMBER.
  2. ALL ELECTRICAL CHASSIS GROUND CONNECTIONS WILL USE STAR WASHERS.
  3. ALL EXTERIOR WIRING CONNECTIONS WILL BE COVERED WITH MASTIC LINED HEAT SHRINK TUBING.
  4. NC - NO CONNECTION

|   |     |          |   |       |
|---|-----|----------|---|-------|
| G | SMK | 8/18/03  | ADDED "REPLACED BY" PART # TO NON-CURRENT BLOCK         | 08194 |
| F | MLS | 8/14/01  | REF ITEMS (14, 17, 19, & 20) PARTS COME IN A/C KIT      | 06486 |
| E | DWR | 09/19/00 | CORR A/C KILL RLY CONN                                  | 05598 |
| D | DCW | 8/22/00  | MADE MULTIPLE REV. TO DWG AND BOM                       | 05511 |
| C | DWR | 06/22/00 | ADDED KILL RLY WITH LIFT DOOR OPEN; VENDOR CHGD RLY PNL | 05326 |
| - | JWW | 10/19/98 | RELEASE TO PRODUCTION                                   | 03848 |

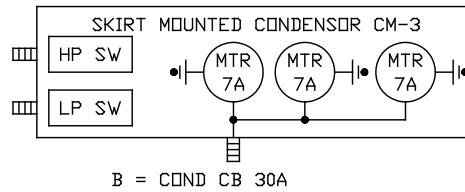
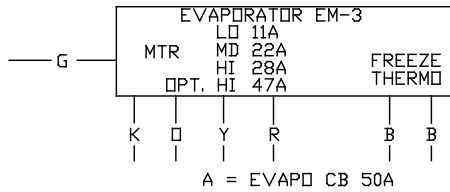
**ENC**  
 304 AVENUE B  
 SO. INDUSTRIAL AREA  
 SALINA, KS. 67401

ELDORADO NATIONAL CO. A THOR INDUSTRIES COMPANY

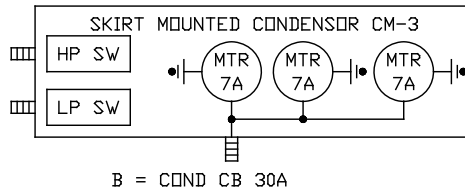
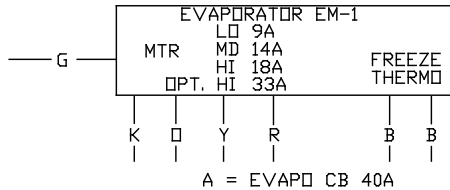
|   |  |   |  |
|---|--|---|--|
| NEXT ASSY.: NONE  |  | TITLE: A/C SCHEMATIC, AT/AL/ATC CAC MAX |  |
| SUPERCEDES: 0024076   |  | MAT'L SPEC. SEE B.O.M.                  |  |
| DO NOT SCALE DRAWING  |  | PART NUMBER 0025176                     |  |
| MARK PART NUMBER AND REVISION ON ALL PARTS  |  | PAGE 2 OF 3                             |  |
| THIS DRAWING IS THE PROPERTY OF ELDORADO NATIONAL COMPANY, A THOR INDUSTRIES COMPANY AND IS NOT TO BE DUPLICATED OR USED IN ANY WAY DETRIMENTAL TO THEIR BEST INTEREST. |  | DRAWING INFORMATION                     |  |
| TOLERANCE UNLESS SPECIFIED  |  | DRAWN: WARD CKD.:                       |  |
| FRACTIONS ± 1/16  |  | DATE: 10/19/98                          |  |
| DECIMALS .00 ± .06  |  | SCALE: 1=4                              |  |
| ANGLES ± 1 DEG.   |  | WT.:                                    |  |

0025176

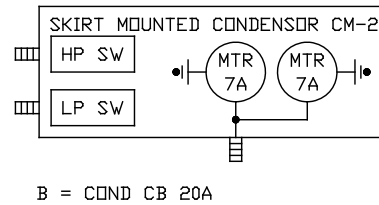
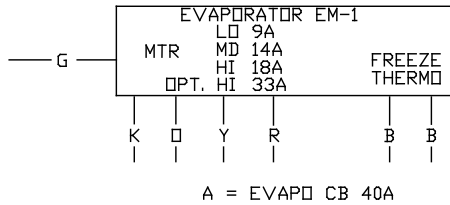
A/C 663



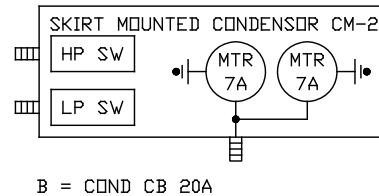
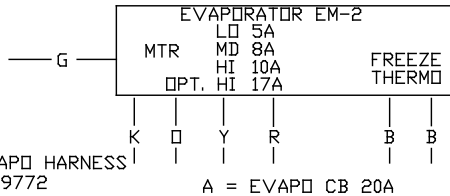
A/C 553



A/C 552



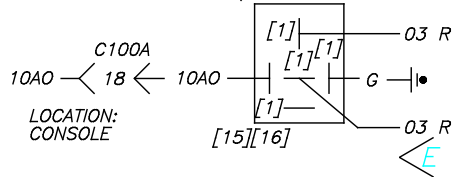
A/C 442



REAR EVAPD HARNESS IS P/N 69772

OPTIONAL

A/C KILL RLY



NOTE  
1. NS-NOT SHOWN ON THIS DRAWING

NS

| ITEM | QTY.  | PART NO. | DESCRIPTION                            |
|------|-------|----------|--|
| 1    | 4     | 68467    | TERM, AMP 14-16 AWG RELAY CONN         |
| 2    | 4     | 68468    | TERM, AMP 10-12 AWG RELAY CONN         |
| 3    | 1     | 0024465  | PANEL, NAV EVAPD RELAY                 |
| 4    | 1     | 62161    | CONN, RING 10-12 AWG X 1/4 INS         |
| 5    | 6     | 62320    | CONN, RING 14-16 AWG X #10 INS         |
| 6    | 5     | 62160    | CONN, RING 10-12 AWG X #10 INS         |
| 7    | 1     | 0025454  | HARNASS, AL/ALC/AT/ATC REAR EVAPORATOR |
| 8    | 1     | 68451    | BLOCK, TERM 6-POS 1-ROW #10            |
| 9    | 4     | 112927   | NUT, #10-32 KEP PLTD HEX               |
| 10   | 3     | 116960   | SCREW, TEK #8 X 3/4" PH PHIL           |
| 11   | 2     | 0001305  | WASHER, #8 EXT STAR                    |
| 12   | 1     | 60920    | BREAKER, 30A AUTORESET MOUNTABLE       |
| 13   | 9     | 116920   | SCREW, TEK #8 X 1/2" PH PHIL           |
| 14   | REF   | 120426   | KNOB, ROTARY 3-SPEED SWITCH            |
| 15   | 2     | 69860    | CONN, AMP RELAY SOCKET                 |
| 16   | 2     | 68323    | RELAY, SPDT WITH MOUNT                 |
| 17   | REF   | 124860   | SWITCH, ROTARY 3-SPEED                 |
| 18   | 1     | 63069    | FUSE, BLADE 15A                        |
| 19   | REF   | 120427   | SWITCH, THERMOSTAT                     |
| 20   | REF   | 120428   | SWITCH, KNOB THERMOSTAT                |
| 21   | 1     | 0025128  | A/C CONDENSOR CUTOUT                   |
| 22   | 30.00 | 69771    | WIRE, 3-COND A/C COND                  |
| 23   | 30.00 | 69850    | FLEXLOOM, 1/4 SLIT 1 @ 360.00"         |
| 24   | 1.00  | 69095    | WIRE, GXL 14 AWG BROWN 20N 1 @ 12.00"  |
| 25   | 1.00  | 69045    | WIRE, GXL 14 AWG WHITE 25W 1 @ 12.00"  |
| 26   | 1     | 120425   | SWITCH, CONNECTOR WITH HARNESS         |
| 27   |       |          |  |
| 28   | 2.00  | 69085    | WIRE, GXL 14 AWG GREEN G 2 @ 12.00"    |
| 29   | 1.00  | 69065    | WIRE, GXL 14 AWG RED R 1 @ 12.00"      |
| 30   | 1     | 60940    | BREAKER, 10A AUTORESET CROSSMOUNT      |
| 31   | 1     | 119046   | WASHER, 5/16" EXT STAR                 |
| 32   | 2.00  | 69250    | WIRE, GXL 10 AWG BLACK K 2 @ 12.00"    |
| 33   | 1.00  | 69095    | WIRE, GXL 14 AWG BROWN 03N 1 @ 12.00"  |
| 34   | 1     | 60927    | BRKR, 40A AUTORESET XMNT               |

NEXT ASSY.: NONE  
 SUPERCEDES: 0024076  
 DO NOT SCALE DRAWING  
 MARK PART NUMBER AND REVISION ON ALL PARTS

THIS DRAWING IS THE PROPERTY OF ELDERADO NATIONAL COMPANY, A THOR INDUSTRIES COMPANY AND IS NOT TO BE DUPLICATED OR USED IN ANY WAY DETRIMENTAL TO THEIR BEST INTEREST.

| REV. | BY  | DATE     | DESCRIPTION   | ER NUMBER |
|------|-----|----------|---|-----------|
| G    | SMK | 8/18/03  | ADDED "REPLACED BY" PART # TO NON-CURRENT BLOCK         | 08194     |
| F    | MLS | 8/14/01  | REF ITEMS (14, 17, 19, & 20) PARTS COME IN A/C KIT      | 06486     |
| E    | DWR | 09/19/00 | CORR A/C KILL RLY CONN                                  | 05598     |
| D    | DCW | 8/22/00  | MADE MULTIPLE REV. TO DWG AND BOM                       | 05511     |
| C    | DWR | 06/22/00 | ADDED KILL RLY WITH LIFT DOOR OPEN: VENDOR CHGD RLY PNL | 05326     |
| -    | JWW | 10/19/98 | RELEASE TO PRODUCTION                                   | 03848     |

| TOLERANCE UNLESS SPECIFIED |           | DRAWING INFORMATION |         |
|----------------------------|-----------|---------------------|---------|
| FRACTIONS                  | ± 1/16    | DRAWN: WARD         | CKD.:   |
| DECIMALS                   | .00 ± .06 | DATE: 10/19/98      | SIZE: A |
| ANGLES                     | ± 1 DEG.  | SCALE: 1=4          | WT.:    |



304 AVENUE B  
SO. INDUSTRIAL AREA  
SALINA, KS. 67401

ELDERADO NATIONAL CO. A THOR INDUSTRIES COMPANY  
 TITLE:  
 A/C SCHEMATIC, AT/AL/ATC CAC MAX

MAT'L SPEC.  
 SEE B.O.M.

PART NUMBER  
 0025176

PAGE  
 3 OF 3