
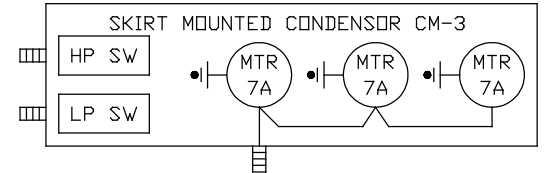
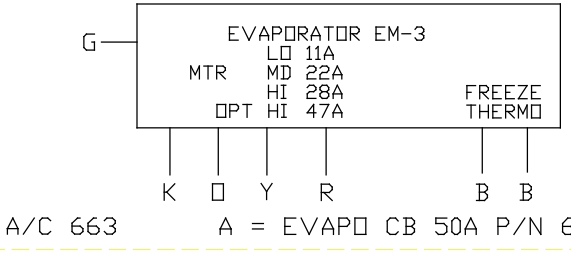
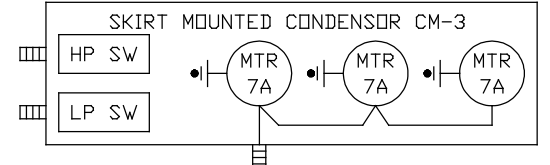
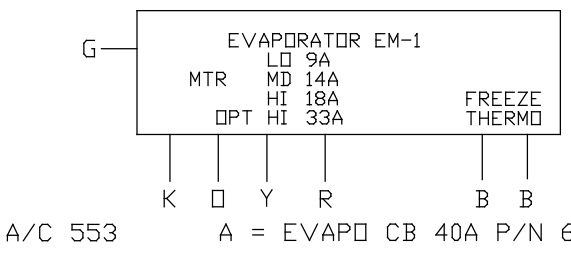
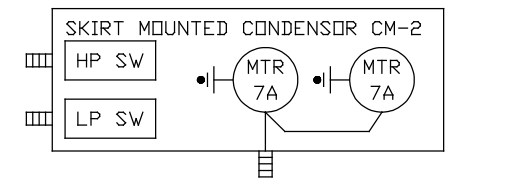
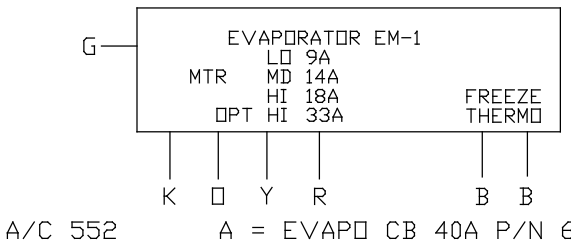
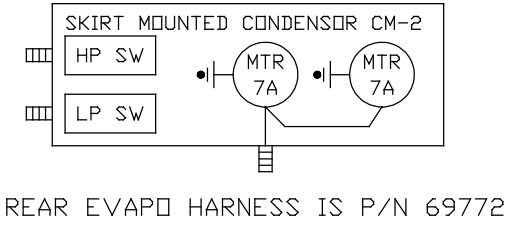
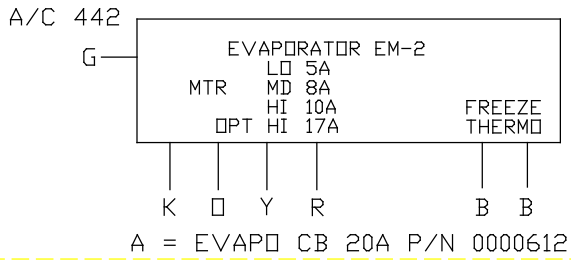


- NOTE:
- [Y] WHERE Y REFERS TO THE B.O.M. ITEM NUMBER.
  - ALL ELECTRICAL CHASSIS GROUND CONNECTIONS WILL USE STAR WASHERS.
  - ALL EXTERIOR WIRING CONNECTIONS WILL BE COVERED WITH MASTIC LINED HEAT SHRINK TUBING.
  - FB - FUSE BLOCK
  - B.O.M.#23 - LENGTH IS FOR LONGEST BUS.
  - TERMINAL STRIP - 8 AWG K FOR DUCTED AND 8 AWG D FOR FREE BLOW.
  - THE FORD DASH A/C IS COMPLETELY SEPARATE FROM THE ENC A/C SYSTEM.
  - FOR A/C PRESSURE SWITCHES, CONSULT THE APPROPRIATE MANUFACTURER'S SERVICE MANUAL.

NEXT ASSY.: NONE				B	BJM	10/12/98	ADDED B.O.M. ITEM #43	03799	 304 AVENUE B SO. INDUSTRIAL AREA SALINA, KS. 67401
SUPERCEDES: 0019994, 0019003, 0021716				A	DWR	06/16/98	ADD ATC TO TITLE	03507	
DO NOT SCALE DRAWING				-	BJM	9/10/97	RELEASE TO PRODUCTION	02710	
MARK PART NUMBER AND REVISION ON ALL PARTS				REV.	BY	DATE	DESCRIPTION	ER NUMBER	
THIS DRAWING IS THE PROPERTY OF ELDORADO NATIONAL COMPANY, A THOR INDUSTRIES COMPANY AND IS NOT TO BE DUPLICATED OR USED IN ANY WAY DETRIMENTAL TO THEIR BEST INTEREST.				TOLERANCE UNLESS SPECIFIED			DRAWING INFORMATION		
				FRACTIONS ± 1/16 DECIMALS .00 ± .06 ANGLES ± 1 DEG.			DRAWN: MCQUILLAN DATE: 9/10/97 SCALE: 1=4		
							MATERIAL SPEC.		
							SEE B.O.M.		
							PART NUMBER		
							0024076		
							PAGE		
							1 of 3		




ITEM	QTY.	PART NO.	DESCRIPTION
1	12	68467	TERM, AMP 14-16 AWG RELAY CONN
2	8	68468	TERM, AMP 10-12 AWG RELAY CONN
3	2	61701	CONN, BUTT 8 AWG INS
4	2	61680	CONN, BUTT 10-12 AWG INS
5	13	62320	CONN, RING 14-16 AWG X #10 INS
6	9	62160	CONN, RING 10-12 AWG X #10 INS
7	1	62161	CONN, RING 10-12 AWG X 1/4" INS
8	1	68450	BLOCK, TERMINAL #4721-P12
9	8	112927	NUT, #10-32 KEP PLTD HEX
10	2	116960	SCREW, TEK #8 X 3/4" PH PHIL
11	2	0001305	WASHER, #8 EXT STAR
12	1	60920	BREAKER, 30A AUTORESET MOUNTABLE
13	7	116920	SCREW, TEK #8 X 1/2" PH PHIL
14	1	60927	BREAKER, 40A AUTORESET CROSSMNT
15	5	69860	CONN, AMP RELAY MODULE
16	5	68323	RELAY, SPDT WITH MOUNT
17	1	0000917	CONN, RING 8 AWG X #10 INS
18	1	63069	FUSE, 15A BLADE
19			
20			
21			
22			
23	35.00	69773	WIRE, 7-COND EM-3 EVAPOR 35.00'
24	25.00	69771	WIRE, 3-COND AC COND 25.00'
25	1	124860	SWITCH, ROTARY 3-SPEED
26			
27	1	120427	SWITCH, THERMOSTAT
28	1	120428	KNOB, THERMOSTAT SWITCH
29	1	120425	CONN, SWITCH WITH HARNESS
30	4	129214	TERM, FEM PUSHON 14-16 AWG

NOTE  
 1. NS - NOT SHOWN ON THIS DRAWING

ITEM	QTY.	PART NO.	DESCRIPTION
31	5.00	69085	WIRE, GXL 14 AWG GREEN G 5 @ 12.00"
32	0.50	69065	WIRE, GXL 14 AWG RED R 1 @ 6.00"
33	1.00	69065	WIRE, GXL 14 AWG RED 20R 1 @ 12.00"
34	1.00	69055	WIRE, GXL 14 AWG BLUE B 1 @ 12.00"
35	0.50	69265	WIRE, GXL 10 AWG RED R 1 @ 6.00"
36	1.50	69250	WIRE, GXL 10 AWG BLACK K 3 @ 6.00"
37	1.00	69225	WIRE, GXL 10 AWG ORANGE O 1 @ 12.00"
38	1.00	69215	WIRE, GXL 10 AWG YELLOW Y 1 @ 12.00"
39	1	0000916	CONN, RING 8 AWG X 5/16" INS
40	1	119046	WASHER, 5/16" EXT STAR
41	1	120426	KNOB, ROTARY 3-SPEED SWITCH
42	1.00	69265	WIRE, GXL 10 AWG RED R 1 @ 12.00"
43	1	0025128	A/C CONDENSOR CUTOUTS
44			

◁ B

NOTE  
1. NS - NOT SHOWN ON THIS DRAWING

				 304 AVENUE B SO. INDUSTRIAL AREA SALINA, KS. 67401							
NEXT ASSY.: NONE				B	BJM 10/12/98	ADDED B.O.M. ITEM #43	03799	ELDORADO NATIONAL CO. A THOR INDUSTRIES COMPANY			
SUPERCEDES: 0019994,0019003,0021716				A	DWR 06/16/98	ADD ATC TO TITLE	03507	TITLE:			
DO NOT SCALE DRAWING				-	BJM 9/10/97	RELEASE TO PRODUCTION	02710	SCHEMATIC, AT/AL/ATC CAC A/C MAX			
MARK PART NUMBER AND REVISION ON ALL PARTS				REV.	BY	DATE	DESCRIPTION	REV. NUMBER			
THIS DRAWING IS THE PROPERTY OF ELDORADO NATIONAL COMPANY, A THOR INDUSTRIES COMPANY AND IS NOT TO BE DUPLICATED OR USED IN ANY WAY DETRIMENTAL TO THEIR BEST INTEREST.				TOLERANCE UNLESS SPECIFIED			DRAWING INFORMATION		MAT'L SPEC.		
				FRACTIONS ± 1/16			DRAWN: McQUILLAN		CKD.:		PART NUMBER
				DECIMALS .00 ± .06			DATE: 9/10/97		SIZE: B		0024076
				ANGLES ± 1 DEG.			SCALE: 1=4		WT.:		PAGE
								3 OF 3			