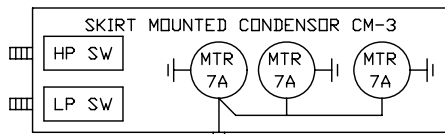
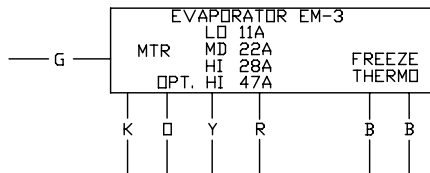


- NOTE:
1. ALL ELECTRICAL CHASSIS GROUND CONNECTIONS WILL USE STAR WASHERS.
 2. [Y] WHERE Y REFERS TO THE B.O.M. ITEM NUMBER.
 3. FB - FUSE BLOCK
 4. ALL EXTERIOR WIRING CONNECTIONS WILL BE COVERED WITH MASTIC LINED HEAT SHRINK TUBING.
 5. B.O.M.#23 - LENGTH IS FOR THE LONGEST BUS.
 6. TB-1 K FOR DUCTED AND O FOR FREE BLOW. THE FORD DASH AC CONTROLS ARE SEPARATE FROM THE ENC AC CONTROLS.
 7. FOR A/C PRESSURE SWITCHES, CONSULT THE APPROPRIATE MANUFACTURER'S SERVICE MANUAL.

NOT CURRENT
 BY J.W. WARD
 DATE: 10/23/98
 REPLACED BY: 0025175

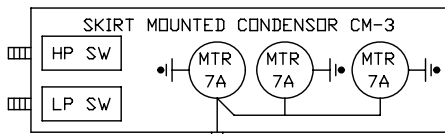
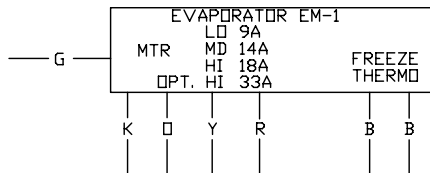
			304 AVENUE B SO. INDUSTRIAL AREA SALINA, KS. 67401		
ELDERADO NATIONAL CO. A THOR INDUSTRIES COMPANY			TITLE: SCHEMATIC, AT/AL CAC A/C TIE-IN		
NEXT ASSY.: NONE SUPERCEDES: 0019001, 0019002, 0020220, 0022179 DO NOT SCALE DRAWING MARK PART NUMBER AND REVISION ON ALL PARTS			REV. BY DATE DESCRIPTION ER NUMBER - BJM 9/9/97 RELEASE TO PRODUCTION 02710		
THIS DRAWING IS THE PROPERTY OF ELDERADO NATIONAL COMPANY, A THOR INDUSTRIES COMPANY AND IS NOT TO BE DUPLICATED OR USED IN ANY WAY DETRIMENTAL TO THEIR BEST INTEREST.			TOLERANCE UNLESS SPECIFIED DRAWING INFORMATION FRACTIONS ± 1/16 DECIMALS .00 ± .06 ANGLES ± 1 DEG.		
DATE: 9/9/97 SCALE: 1=4			DRAWN: MCGUILLAN CKD.: DATE: 9/9/97 SIZE: B SCALE: 1=4 WT.:		
MAT'L SPEC. SEE B.O.M.			PART NUMBER 0024075		
PAGE 1 OF 3					

A/C 663



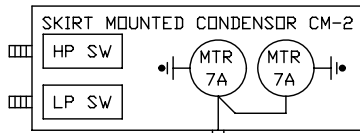
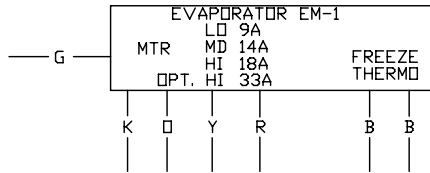
A = EVAPD CB 50A P/N 61160

A/C 553



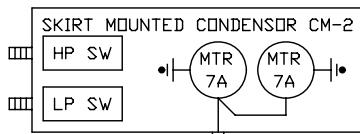
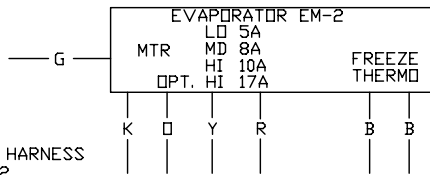
A = EVAPD CB 40A P/N 60927

A/C 552



A = EVAPD CB 40A P/N 60927

A/C 442



A = EVAPD CB 20A P/N 0000612

REAR EVAPD HARNESS IS P/N 69772


ITEM	QTY.	PART NO.	DESCRIPTION
1	12	68467	TERM, AMP 14-16 AWG RELAY CONN
2	8	68468	TERM, AMP 10-12 AWG RELAY CONN
3	1	61800	CONN, BUTT 14-16 AWG INS
4	3	61680	CONN, BUTT 10-12 AWG INS
5	13	62320	CONN, RING 14-16 AWG X #10 INS
6	10	62160	CONN, RING 10-12 AWG X #10 INS
7	1	62161	CONN, RING 10-12 AWG X 1/4" INS
8	1	68450	BLOCK, TERMINAL #4721-P12
9	8	112927	NUT, #10-32 KEP PLTD HEX
10	2	116960	SCREW, TEK #8 X 3/4" PH PHIL
11	2	0001305	WASHER, #8 EXT STAR
12	1	60920	BREAKER, 30A AUTORESET MOUNTABLE
13	7	116920	SCREW, TEK #8 X 1/2" PH PHIL
14	1	0000612	BREAKER, 20A AUTORESET MOUNTABLE
15	5	69860	CONN, AMP RELAY SOCKET
16	5	68323	RELAY, SPDT WITH MOUNT
17	2	60800	DIODE, 6A RECTIFIER
18	1	63069	FUSE, ATC 15A
19			
20			
21			
22			
23	35.00	69773	WIRE, 7-COND EM-3 EVAPORATOR
24	25.00	69771	WIRE, 3-COND AC COND 25.00'
25	1	124860	SWITCH, ROTARY 3-SPEED
26			
27	1	120427	SWITCH, THERMOSTAT
28	1	120428	KNOB, THERMOSTAT SWITCH
29	1	120425	SWITCH, CONNECTOR WITH HARNESS
30	4	129214	TERM, FEM PUSHON 14-16 AWG

NOT CURRENT
 BY J.W. WARD
 DATE: 10/23/98
 REPLACED BY: 0025175

NEXT ASSY.: NONE
 SUPERCEDES: 0019001,0019002,0020220,0022179
 DO NOT SCALE DRAWING
 MARK PART NUMBER AND REVISION ON ALL PARTS
 THIS DRAWING IS THE PROPERTY OF ELDORADO NATIONAL COMPANY, A THOR INDUSTRIES COMPANY AND IS NOT TO BE DUPLICATED OR USED IN ANY WAY DETRIMENTAL TO THEIR BEST INTEREST.

REV.	BY	DATE	DESCRIPTION	ER NUMBER
-	BJM	9/9/97	RELEASE TO PRODUCTION	Q2710

TOLERANCE UNLESS SPECIFIED		DRAWING INFORMATION	
FRACTIONS	± 1/16	DRAWN:GUILIANI	CKD.:
DECIMALS	.00 ± .06	DATE: 9/9/97	SIZE: B
ANGLES	± 1 DEG.	SCALE: 1=4	WT.:



304 AVENUE B
 50. INDUSTRIAL AREA
 SALINA, KS. 67401

ELDORADO NATIONAL CO. A THOR INDUSTRIES COMPANY

TITLE:
 SCHEMATIC, AT/AL CAC A/C TIE-IN

MAT'L SPEC.
 SEE B.O.M.

PART NUMBER
 0024075

PAGE
 2 of 3


ITEM	QTY.	PART NO.	DESCRIPTION
31	5.00	69085	WIRE, GXL 14 AWG GREEN G 1.00'
32	0.50	69065	WIRE, GXL 14 AWG RED R 0.50'
33	1.00	69065	WIRE, GXL 14 AWG RED 20R 1.00'
34	1.00	69055	WIRE, GXL 14 AWG BLUE B 1.00'
35	0.50	69265	WIRE, GXL 10 AWG RED R 0.50'
36	1.50	69250	WIRE, GXL 10 AWG BLACK K 0.50'
37	1.00	69225	WIRE, GXL 10 AWG ORANGE O 1.00'
38	1.00	69215	WIRE, GXL 10 AWG YELLOW Y 1.00'
39	1	62282	CONN, RING 10-12 AWG X 5/16"
40	1	119046	WASHER, 5/16" EXT STAR
41	1	120426	KNOB, ROTARY 3-SPEED SWITCH
42	1.00	69265	WIRE, GXL 10 AWG RED R 1.00'
43	1	0025128	A/C CONDENSOR CUTOUTS
44			
45			

△A

NOT CURRENT
 BY J.W. WARD
 DATE: 10/23/98
 REPLACED BY: 0025175

NEXT ASSY.: NONE
 SUPERCEDES: 0019001, 0019002, 0020220, 0022179
 DO NOT SCALE DRAWING
 MARK PART NUMBER AND REVISION ON ALL PARTS

REV.	BY	DATE	DESCRIPTION	ER NUMBER
-	BJM	9/9/97	RELEASE TO PRODUCTION	02710



304 AVENUE B
 SO. INDUSTRIAL AREA
 SALINA, KS. 67401

ELDORADO NATIONAL CO. A THOR INDUSTRIES COMPANY

TITLE:
 SCHEMATIC, AT/AL CAC A/C TIE-IN

MAT'L SPEC.
 SEE B.O.M.

PART NUMBER
 0024075

THIS DRAWING IS THE PROPERTY OF ELDORADO NATIONAL COMPANY, A THOR INDUSTRIES COMPANY AND IS NOT TO BE DUPLICATED OR USED IN ANY WAY DETRIMENTAL TO THEIR BEST INTEREST.

TOLERANCE UNLESS SPECIFIED

FRACTIONS	± 1/16
DECIMALS	.00 ± .06
ANGLES	± 1 DEG.

DRAWING INFORMATION

DRAWN: MCGILLIAN	CKD.:
DATE: 9/9/97	SIZE: B
SCALE: 1=4	WT.:

PAGE
 3 of 3