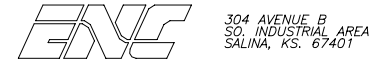


- NOTE:
- [Y] WHERE Y REFERS TO THE B.O.M. ITEM NUMBER.
 - ALL ELECTRICAL CHASSIS GROUND CONNECTIONS WILL USE STAR WASHERS.
 - ALL EXTERIOR WIRING CONNECTIONS WILL BE COVERED WITH MASTIC LINED HEAT SHRINK TUBING.
 - FB - FUSE BLOCK
 - B.O.M.#23 - LENGTH IS FOR LONGEST BUS.
 - TB-1 K FOR DUCTED AND O FOR FREE BLOW.
 - THE FORD DASH AC CONTROLS ARE SEPARATE FROM THE ENC AC CONTROLS.
 - FOR A/C PRESSURE SWITCHES, CONSULT THE APPROPRIATE MANUFACTURER'S SERVICE MANUAL.



REV.	BY	DATE	DESCRIPTION	ER NUMBER
D	DWR	03/12/91	VENDOR CHANGED MOTORS IN REAR EVAP	02250
C	AJD	10/31/94	CHG WIRE UPDATE DWG	00964
B	DWR	12/29/93	CHG FOR '94 FORD	00494
A	DWR	03/05/93	ADD PAGE 3; DEL B.O.M. # 17 CHG B.O.M. #1,2,14,15, & 16	00194
-	DWR	6/22/92	RELEASE TO PRODUCTION	00194




NEXT ASSY.: NONE
 SUPERCEDES: NONE
 DO NOT SCALE DRAWING
 MARK PART NUMBER AND REVISION ON ALL PARTS

THIS DRAWING IS THE PROPERTY OF ELDORADO NATIONAL COMPANY, A THOR INDUSTRIES COMPANY AND IS NOT TO BE DUPLICATED OR USED IN ANY WAY DETRIMENTAL TO THEIR BEST INTEREST.

ELDORADO NATIONAL CO. A THOR INDUSTRIES COMPANY TITLE: SCHEMATIC, '92 553 AC #4120 MAT'L SPEC. SEE B.O.M. PART NUMBER 0019002		PAGE 1 of 3
---	--	-----------------------

ITEM	QTY.	PART NO.	DESCRIPTION
1	10	68467	TERM, AMP 14-16 AWG RELAY CONN
2	6	68468	TERM, AMP 10-12 AWG RELAY CONN
3	2	61701	CONN, BUTT 8 AWG INS
4	2	61680	CONN, BUTT 10-12 AWG INS
5	8	62320	CONN, RING 14-16 AWG X #10 INS
6	9	62160	CONN, RING 10-12 AWG X #10 INS
7	1	62161	CONN, RING 10-12 AWG X 1/4" INS
8	1	68451	BLOCK, 6-POS 1-ROW #10 TERMINAL
9	6	112927	NUT, #10-32 KEP PLTD HEX
10	2	116960	SCREW, TEK #8 X 1/2" PH PHIL
11	2	0001305	WASHER, #8 EXT STAR
12	1	60920	BREAKER, 30A AUTORESET MOUNTABLE
13	6	116920	SCREW, TEK #8 X 1/2" PH PHIL
14	1	60800	DIODE, 6A RECTIFIER
15	4	69860	CONN, AMP RELAY SOCKET
16	4	68323	RELAY, SPDT WITH MOUNT
17	1	60927	BREAKER, 40A AUTORESET CROSSMNT
18	1	63069	FUSE, 15A BLADE
19	1	0000917	CONN, RING 8 AWG X #10 INS
20			
21			
22			
23	35.00	69773	WIRE, 7-COND EM-3 EVAPO 35.00'
24	25.00	69771	WIRE, 3-COND AC COND 25.00'
25	1	124860	SWITCH, ROTARY 3-SPEED
26	2	62041	CONN, FEM PUSHON 14-16 AWG ENC
27	1	120427	SWITCH, THERMOSTAT
28	1	120428	KNOB, SWITCH THERMOSTAT
29	1	120425	SWITCH, CONNECTOR WITH HARNESS

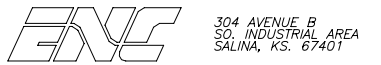
						 304 AVENUE B SO. INDUSTRIAL AREA SALINA, KS. 67401		
D	DWR	03/12/97	VENDOR CHANGED MOTORS IN REAR EVAPO	02250				
C	AJD	10/31/94	CHG WIRE UPDATE DWG	00964				
B	DWR	12/29/93	CHG FOR '94 FORD	00494				
A	DWR	03/05/93	ADD PAGE 3; DEL B.O.M. # 17 CHG B.O.M. #1,2,14,15, & 16	00194				
-	DWR	6/22/92	RELEASE TO PRODUCTION	00194				
NEXT ASSY.: NONE			REV.	BY	DATE	DESCRIPTION	ER NUMBER	
SUPERCEDES: NONE			THIS DRAWING IS THE PROPERTY OF ELDORADO NATIONAL COMPANY, A THOR INDUSTRIES COMPANY AND IS NOT TO BE DUPLICATED OR USED IN ANY WAY DETRIMENTAL TO THEIR BEST INTEREST.				TOLERANCE UNLESS SPECIFIED FRACTIONS ± 1/16 DECIMALS .00 ± .06 ANGLES ± 1 DEG.	DRAWING INFORMATION DRAWN: FREED DATE: 6/22/92 SCALE: NTS
DO NOT SCALE DRAWING			ELDORADO NATIONAL CO. A THOR INDUSTRIES COMPANY TITLE: SCHEMATIC, '92 553 AC #4120				MAT'L SPEC. SEE B.O.M.	PART NUMBER 0019002
MARK PART NUMBER AND REVISION ON ALL PARTS			PAGE 2 of 3					

ITEM	QTY.	PART NO.	DESCRIPTION
30	4	129214	TERM, FEM PUSHON 14-16 AWG
31	4.00	69085	WIRE, GXL 14 AWG GREEN G 1.00'
32	0.50	69065	WIRE, GXL 14 AWG RED R 0.50'
33	1.00	69095	WIRE, GXL 14 AWG BROWN 20N 1.00'
34	1.00	69095	WIRE, GXL 14 AWG BROWN 03N 1.00'
35	0.50	69265	WIRE, GXL 10 AWG RED R 0.50'
36	1.00	69250	WIRE, GXL 10 AWG BLACK K 0.50'
37	1.00	69225	WIRE, GXL 10 AWG ORANGE O 1.00'
38	1.00	69215	WIRE, GXL 10 AWG YELLOW Y 1.00'
39	1	0000916	CONN, RING 8 AWG X 5/16" INS
40	1	119046	WASHER, 5/16" EXT STAR
41	1	120426	KNOB, ROTARY 3-SPEED SWITCH
42			
43			
44			
45			

NEXT ASSY.: NONE
SUPERCEDES: NONE
DO NOT SCALE DRAWING
MARK PART NUMBER AND REVISION ON ALL PARTS

THIS DRAWING IS THE PROPERTY OF ELDORADO NATIONAL COMPANY, A THOR INDUSTRIES COMPANY AND IS NOT TO BE DUPLICATED OR USED IN ANY WAY DETRIMENTAL TO THEIR BEST INTEREST.

REV.	BY	DATE	DESCRIPTION	ER NUMBER
D	DWR	03/12/97	VENDOR CHANGED MOTORS IN REAR EVAPO	02250
C	AJD	10/31/94	CHG WIRE UPDATE DWG	00964
B	DWR	12/29/93	CHG FOR '94 FORD	00494
A	DWR	03/05/93	ADD PAGE 3; DEL B.O.M. # 17 CHG B.O.M. #1,2,14,15, & 16	00194
-	DWR	6/22/92	RELEASE TO PRODUCTION	00194



ELDORADO NATIONAL CO. A THOR INDUSTRIES COMPANY
TITLE:
SCHEMATIC, '92 553 AC
#4120
MAT'L SPEC.
SEE B.O.M.
PART NUMBER
0019002
PAGE
3 OF 3

TOLERANCE UNLESS SPECIFIED		DRAWING INFORMATION	
FRACTIONS	± 1/16	DRAWN: FEED	CKD.:
DECIMALS	.00 ± .06	DATE: 6/22/92	SIZE: B
ANGLES	± 1 DEG.	SCALE: NTS	WT.: